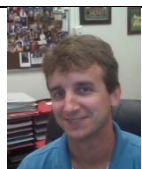


Academics · Classroom Behavior · Bullying · Parent-Teacher Conferences · Crisis · Peer Mediation · College and Career Planning · Classroom Guidance · Individual Counseling · Small Group Counseling · Scheduling

MHS School Counseling Department



Jonathan A. Putt, M.A., *School Counseling Department Chair*

School Counselor, 10th – 12th IB

Liaison to IB Coordinator, Naviance Co-Coordinator, lead counselor for foreign exchange students, ELP and IB support groups, scholarship chair for “in house” scholarships



Grace Matthews, M.Ed.

School Counselor, 9th (A-J), ED program, FLS

Liaison to the ED and FLS programs. Liaison for Gifted and Talented programs. Provide support for the 9th graders in areas of social/emotional development and academic and career development. Assisting in creating 4 year plans



Tiffany Spalding, M.S.

School Counselor, 9th (K-Z), ELL students

Co-Coordinator for the Peer Mediation Program, Assisting in creating 4 year plans for all 9th graders, small group counseling for academics, and at-risk/anger management. Co-Coordinator for S2S program.



Marquenta Taylor, M.Ed.

School Counselor, 10th – 12th (A-Da)

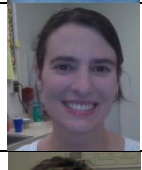
Assist the Department Chair, Scholarship Coordinator for the Senior Class, coordinator of the annual Meade college fair, Naviance Co-Coordinator. Lead counselor for 12th grade programs.



George Williams, Ph.D.

School Counselor, 10th – 12th (De-J)

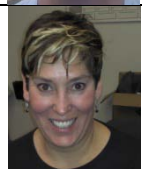
Coordinator for Personal Registration Day with Anne Arundel Community College. Provide support and counseling services for assigned student caseload in grades 10-12. Assist students in maintaining 4 year plans and future career goals. 11th grade liaison.



Kandice Smith, M.Ed.

School Counselor, 10th-12th (K-Re)

Coordinator for college visits, ASVAB testing coordinator, Liaison to Homeland Security Program. Provide support and counseling services for assigned student caseload in grades 10-12.



Bianca Pilewski, M.S.

School Counselor, 10th-12th (Ri-Z)

Coordinator of College & Career program. Liaison for Algebra II seminar program. Co-Coordinator for S2S program. Provide assistance to assigned student caseload in grades 10-12.



Shira R. Reicher, M.A., C.A.S., N.C.S.P.

School Psychologist

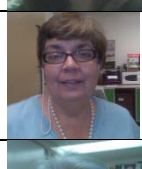
Individual, group, and crisis counseling. Consultation. Behavior assessment and intervention. PBIS Coach. RST. School Beautification Chair. Empower MEade



Shana Wohl, M.A.

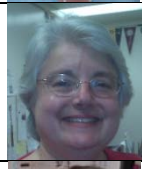
School Psychologist

Assist with individual and group counseling, teacher/parent consultation, in-service presentations, and targeted interventions.



Deborah Sumpter, Registrar

Facilitates enrollment and withdrawal of all students and maintains files. Homeless Liaison. Coordinates appropriate school personnel to assist with student enrollment.



Denise Maxwell, B.S., School Counseling Assistant

Clerical and support work for counselors, social security & MVA forms, issuing officer for MD work permits, and handles student records for testing and transcripts



Carla S. Diffenderfer, M.Ed., Pupil Personnel Worker

Monitor and initiate interventions to improve attendance. Advocate for students and families by networking with appropriate school personnel and community agencies to help students meet with success. Assist with enrollment, homelessness as well as custody issues.